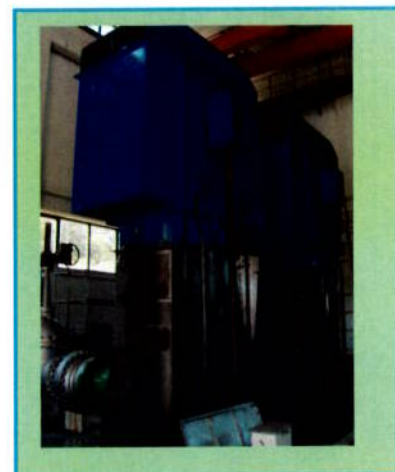


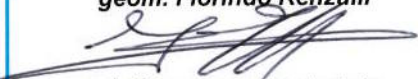

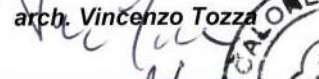
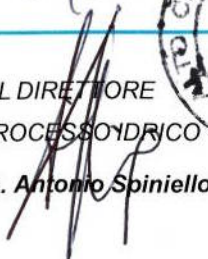
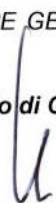
LAVORI DI MANUTENZIONE ORDINARIA E STRAORDINARIA DELLE APPARECCHIATURE ELETTROMECCANICHE A SERVIZIO DEGLI IMPIANTI DI SOLLEVAMENTO GESTITI DALL'ALTO CALORE SERVIZI SpA – PROCESSO IDRICO – esercizio 2015/2016



UBICAZIONE IMPIANTI DI SOLLEVAMENTO in BT

Allegati:
✓

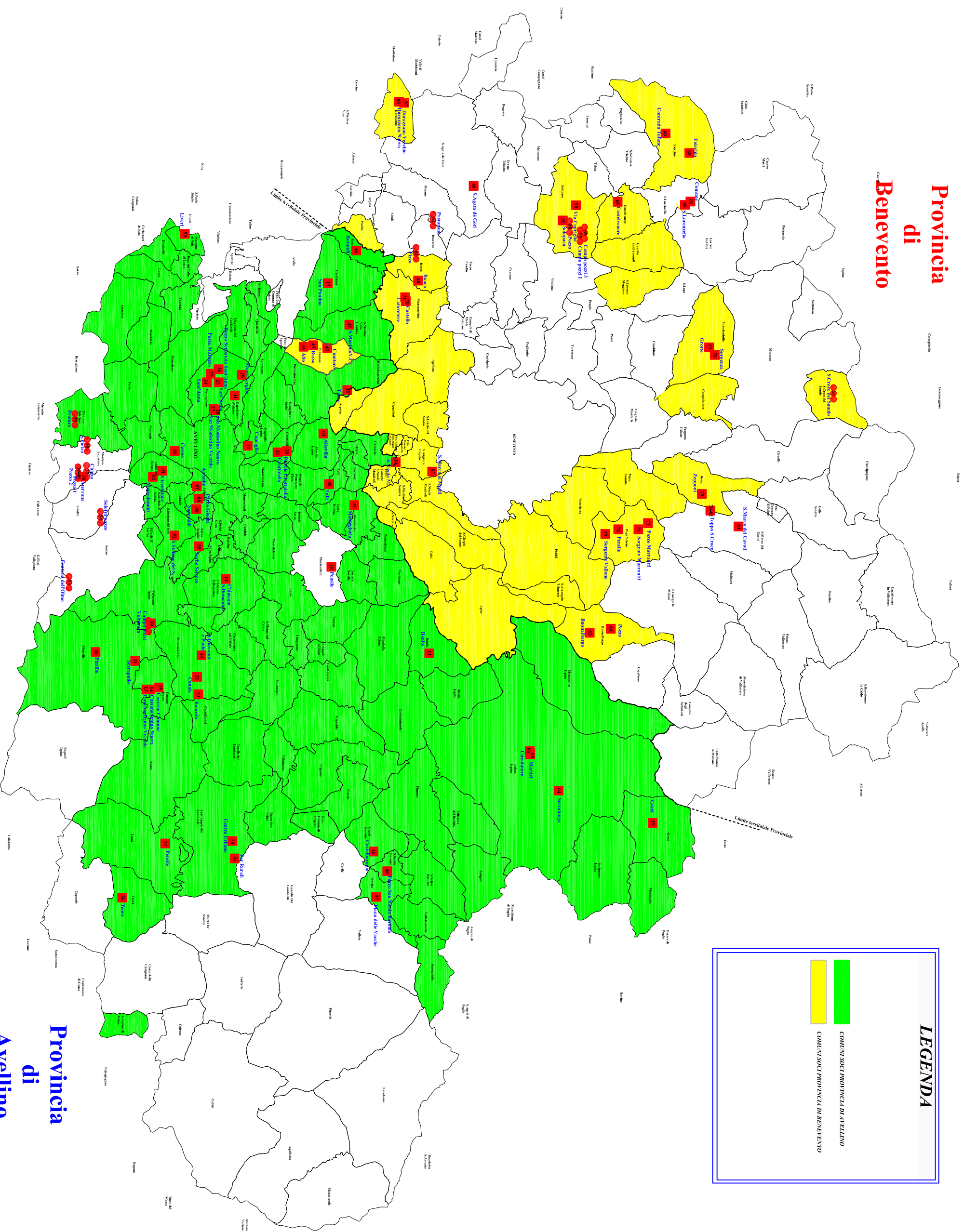
ALLEGATO n°: 04	SCALA:	DATA: 20.06.2015
---------------------------	--------	----------------------------



<p style="text-align: center;">I PROGETTISTI geom. Florindo Renzulli  p.i. Francesco Bardesiato  arch. Vincenzo Tozza </p>	<p style="text-align: center;">IL COORDINATORE DELLA SICUREZZA Arch. Anna Pascale</p>
<p style="text-align: center;">IL DIRETTORE DI PROCESSO IDRICO geom. Antonio Spiniello </p>	<p style="text-align: center;">IL DIRETTORE GENERALE Ing. Eduardo di Gennaro </p>

<p style="text-align: center;">IL RESP. DEL PROCEDIMENTO p.i. Francesco Saccardo </p>
<p style="text-align: center;">IL PRESIDENTE E AMMINISTRATORE DELEGATO Dott. Raffaello de Stefano </p>

Provincia di Benevento



LEGENDA

COMUNI SOCI PROVINCIA DI AVELLINO

COMUNI SOCI PROVINCIA DI BENEVENTO

Provincia di Avellino